

POPULATION STATISTICS

SPARTANBURG COUNTY

2000

Resident Population	
2000	253,791
1995	240,300
1990	226,800
1990 – 2000	11% increase

Race		
Total	253,791	
White	190,569	75.1%
Black	52,775	20.8%
American Indian & Alaskan Native	555	.2%
Asian	3,738	1.5%
Native Hawaiian & Pacific Islander	86	.03%
Other	3,437	1.4%
Two or More Races	2,631	1.0%

Gender		
Total = 253,791	Male = 123,338 (48.6%)	Female = 130,453 (51.4%)

Comparative Age Distribution	
Median Age: 36.1 Years	
< 5	6.6
5-14	14.3
15-19	6.8
20-24	6.4
25-34	14.3
35-54	29.6
55-64	9.5
65+	12.5

City of Spartanburg Population	
2000	39,673
1990	43,479

POPULATION STATISTICS

**MSA
2000**

Resident Population	
2000	962,441
1995	884,500
1990	830,539
1990 – 2000	14% increase

Race		
Total	962,441	
White	760,457	79.0%
Black	168,081	17.5%
American Indian & Alaskan Native	1,925	.2%
Asian	11,158	1.2%
Native Hawaiian & Pacific Islander	308	.03%
Other	10,876	1.1%
Two or More Races	9,636	1.0%

Gender		
Total = 962,441	Male = 468,895 (48.7%)	Female = 493,546 (51.3%)

Comparative Age Distribution Median Age: 35.7 Years	
< 5	6.6
5-14	13.9
15-19	7.0
20-24	7.1
25-34	14.3
35-55	29.4
55-64	9.4
65+	12.3

INCOME STATISTICS

SPARTANBURG COUNTY

2000

Per Capita Income	
2000	23,803
1995*	19,982
1990	16,291
1990 – 2000	46% increase

Median Household Income	
2000	37,579
1995	32,686
1990	26,941
1990 – 2000	40% increase

Median Family Income	
2000	45,349
1995	40,679
1990	31,857
1990 – 2000	42% increase

Household Income Distribution	
Total Households 97,658	
< \$10,000	11.0%
\$10,000 - \$14,999	7.1%
\$15,000 - \$24,999	14.5%
\$25,000 - \$34,999	13.8%
\$35,000 - \$49,999	18.1%
\$50,000 - \$74,999	19.3%
\$75,000 - \$99,999	8.6%
\$100,000 - \$149,999	5.0%
\$150,000 +	2.5%

Source: US Bureau of the Census
 1995 projections by Claritas Corporation
 *US Bureau of Economic Analysis

INCOME STATISTICS

MSA
2000

Per Capita Income	
2000	25,277
1995*	20,565
1990	16,814
1990 - 2000	50% increase

Median Household Income	
2000	38,458
1995	30,350
1990	26,941
1990 - 2000	43% increase

Median Family Income	
2000	45,349
1995	38,182
1990	31,857
1990 - 2000	42% increase

Household Income Distribution Total Households 374,892	
< \$10,000	10.7%
\$10,000 - \$14,999	6.9%
\$15,000 - \$24,999	14.2%
\$25,000 - \$34,999	13.7%
\$35,000 - \$49,999	17.8%
\$50,000 - \$74,999	19.3%
\$75,000 - \$99,999	8.7%
\$100,000 - \$149,999	5.9%
\$150,000 +	3.0%

Source: US Bureau of the Census
1995 projections by Claritas Corporation
*US Bureau of Economic Analysis

AVAILABLE LABOR

SPARTANBURG AND NEIGHBORING COUNTIES

(July 2003)

South Carolina	Labor Force	Employed	Unemployed	Unemployment Rate
Spartanburg	135,420	124,590	10,830	8.0
Greenville	202,670	193,000	9,670	4.8
Anderson	87,270	80,810	6,460	7.4
Cherokee	27,430	24,900	2,530	9.2
Pickens	58,690	53,720	4,970	8.5
MSA TOTAL	511,480	477,020	34,460	6.7
Laurens	28,550	25,100	3,450	12.1
Union	14,330	12,410	1,920	13.4
North Carolina	Labor Force	Employed	Unemployed	Unemployment Rate
Polk	8,430	8,112	318	3.8
Rutherford	28,973	26,082	2,891	10.0
NC TOTAL	37,403	34,194	3,209	8.6
REGION	591,763	548,724	43,039	7.3

Sources: South Carolina Employment Security Commission
North Carolina Employment Security Commission

LABOR CLIMATE

In the last nine years there has been no union activity in manufacturing with the exception of Flowers Baking Company, which was a decertification and Interstate Brands which was a certification. South Carolina is the least unionized state in the nation and Spartanburg is one of the least unionized counties in the state. Total membership for labor organizations in Spartanburg County is 747, which is .6% of our total employment.

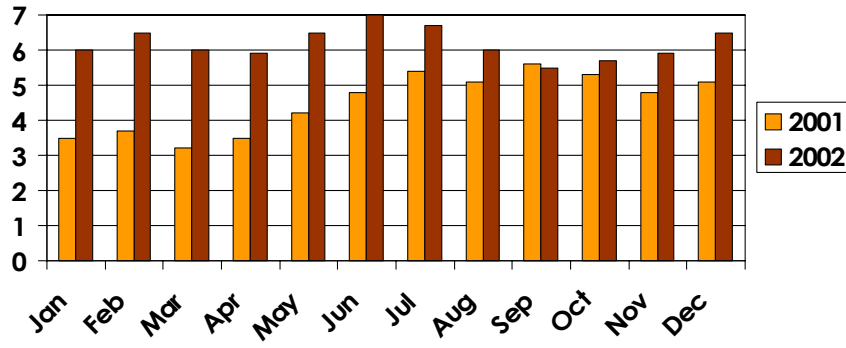
History of Union Activity			
Year	Company	Labor Organization	Election Outcome
2000	Land-O-Sun (Pet Dairy)	IBT	Union lost
2000	Charter Communications	CWA	Union lost
1999			no elections held
1998			no elections held
1997	Interstate Brands (Merita Bread Division)	UAW	certification
1996	Customized Transportation, Inc.	UNITE	certification
1995	Flowers Baking Co	BCWU	decertification
1994			no elections held

Unionized Companies	
Company	Labor Organization
Customized Transportation	UNITE
Interstate Brands (Merita Bread Division)	UAW
Kohler Company	GMP, IBT
Spartanburg Steel Products, Inc.	IMAW

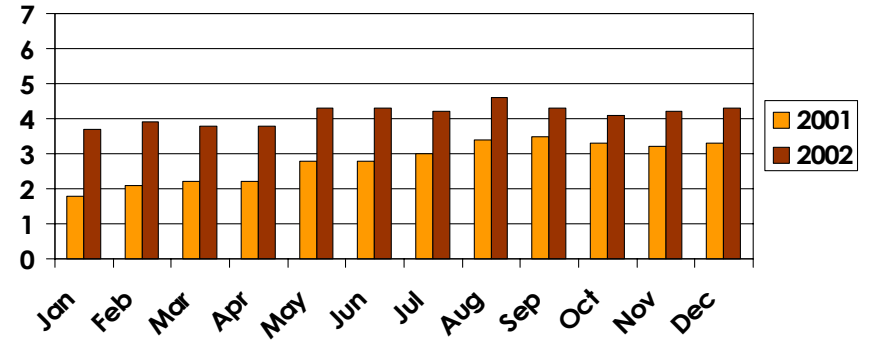
Source: Spartanburg Development Association
 South Carolina Chamber of Commerce
 SC Employment Security Commission
 SC Department of Commerce

UNEMPLOYMENT TRENDS

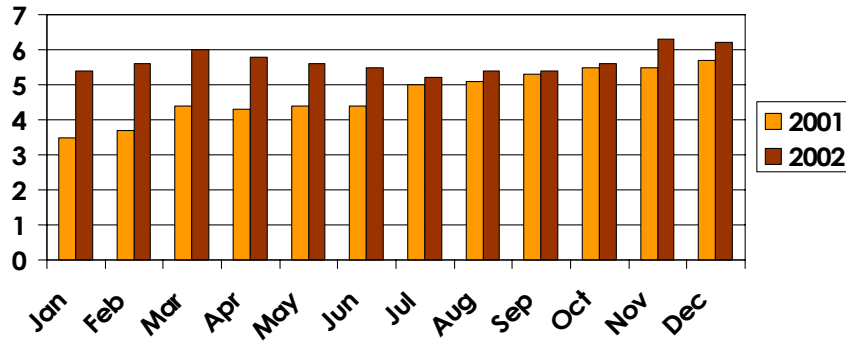
Spartanburg County



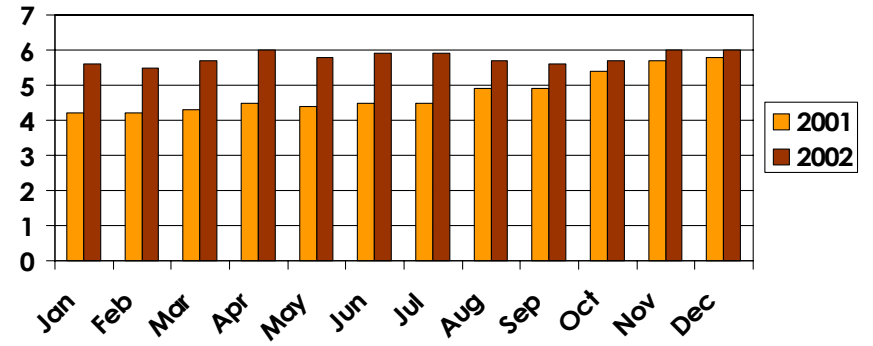
Greenville County



South Carolina



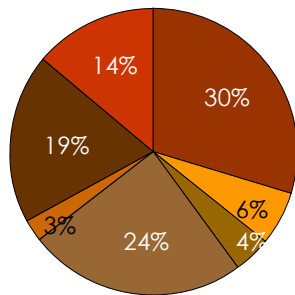
United States



LABOR FORCE BY INDUSTRY GROUP

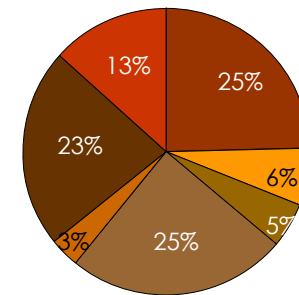
2001

Spartanburg County



- **Manufacturing** 35,750
- **Construction & Mining** 7,560
- **Transportation & Public Utilities** 5,000
- **Wholesale & Retail Trade** 29,290
- **Finance, Insurance & Real Estate** 3,120
- **Services** 23,270
- **Government** 16,680
- **Total** 120,670

MSA



- **Manufacturing** 119,850
- **Construction & Mining** 30,540
- **Transportation & Public Utilities** 24,190
- **Wholesale & Retail Trade** 118,870
- **Finance, Insurance & Real Estate** 15,950
- **Services** 109,090
- **Government** 63,870
- **Total** 482,340

DAILY COMMUTING PATTERNS SPARTANBURG AND NEIGHBORING COUNTIES

County	In-Commuting From	Out-Commuting To
Greenville	11,205	14,586
Anderson	1,264	480
Cherokee	3,937	2,029
Pickens	784	198
Laurens	1,381	703
Union	2,854	522
Polk	1,525	518
Rutherford	883	266
Total	23,833	19,302

All workers commuting out of Spartanburg	21,592
All workers commuting into Spartanburg	26,874

CAPITAL INVESTMENT SPARTANBURG COUNTY

Year	New Business & Industry		Expanded Business & Industry		Total Business & Industry			
	Capital Investment	Jobs Created	Capital Investment	Jobs Created	Capital Investment	State Ranking	Jobs Created	State Ranking
2002	32,476,000	291	853,633,700	1,207	886,109,700	1	1,498	5
2001	44,200,000	610	159,993,700	758	204,193,700	7	1,368	4
2000	62,050,000	603	466,739,300	2,290	528,789,300	3	2,893	3
1999	26,400,000	232	546,498,100	1,752	572,898,100	3	1,984	5
1998	10,000,000	30	873,711,600	3,004	883,711,600	2	3,034	2
1997	1,760,000	28	522,676,000	1,492	524,436,000	3	1,520	6
1996	61,525,000	324	783,312,100	1,201	844,837,100	1	1,525	6
1995	25,000,000	170	283,159,800	2,072	308,159,800	5	2,242	2
1994	339,500,000	739	212,520,000	630	552,020,000	1	1,369	3
1993	95,700,000	526	132,706,000	724	228,406,000	4	1,250	3
1992	529,865,000	3,052	87,920,000	389	617,785,000	1	3,441	1

RETAIL SALES HISTORY

SPARTANBURG COUNTY

YEAR	RETAIL SALES
2002	\$5,757,258,615
2001	\$5,213,028,315
2000	\$5,290,018,938
1999	\$5,180,457,393
1998	\$5,440,245,468
1997	\$5,242,936,433
1996	\$5,008,271,912
1995	\$4,944,252,268
1994	\$4,725,041,846
1993	\$4,267,384,315
1992	\$4,084,842,298

ECONOMIC INDICATORS

SPARTANBURG COUNTY

2002

1ST Quarter 2nd Quarter 3rd Quarter 4th Quarter Year-To-Date

BUILDING PERMITS

COUNTY	1 ST Quarter	2 nd Quarter	3 rd Quarter	4 th Quarter	Year-To-Date
Residential	424	394	376	325	1,519
Value	\$35,697,555	\$36,243,031	\$33,768,513	\$31,292,041	\$137,001,140
Commercial/Industrial	60	73	90	20	243
Value	\$9,676,958	\$6,067,514	\$8,258,255	\$2,849,658	\$26,852,385
CITY					
Residential	21	11	12	4	48
Value	\$660,000	\$992,760	\$1,289,650	\$430,000	\$3,372,410
Commercial/Industrial	15	6	7	4	32
Value	\$49,119,103	\$6,743,600	\$3,867,131	\$15,491,000	\$75,220,834

AIR TRAFFIC

	1 ST Quarter	2 nd Quarter	3 rd Quarter	4 th Quarter	Year-To-Date
Passenger	290,763	369,018	360,888	366,159	1,386,828
Air Cargo (tons)	5,315	5,590	5,420	5,708	22,033

RETAIL SALES

	1 ST Quarter	2 nd Quarter	3 rd Quarter	4 th Quarter	Year-To-Date
Spartanburg County	1,267,430,475	1,627,736,319	1,477,212,563	1,385,379,258	5,757,258,615

COST OF LIVING COMPARISON

FIRST QUARTER 2002

CITY	100% COMPOSITE INDEX	16% GROCERY ITEMS	28% HOUSING	8% UTILITIES	10% TRANSPOR- TATION	5% HEALTH CARE	33% MISC. GOODS
Spartanburg, SC	92.5	99.4	85.9	91.5	95.2	91.7	94.4
Columbia, SC	95.9	97.0	94.3	113.3	89.7	94.1	94.6
Charleston, SC	103.1	101.6	105.4	109.2	94.6	100.6	103.4
Charlotte, NC	95.1	99.6	89.2	89.8	104.4	93.8	96.7
Raleigh, NC	101.2	108.9	102.8	95.8	96.6	104.4	98.4
Atlanta, GA	99.0	101.7	97.8	87.4	103.7	100.2	99.8
Jacksonville, FL	92.6	102.6	83.0	83.6	95.5	89.8	97.6
Richmond, VA	104.4	104.4	101.8	107.6	100.8	93.7	108.6
Dayton, OH	95.3	91.6	91.4	96.8	91.3	100.1	100.6
Montgomery, AL	93.2	87.9	87.7	102.0	102.5	89.8	95.8

Based on an index of 100.0 = Average
 Source: American Chamber of Commerce Researchers Association

TOP FORTY INDUSTRIAL AND OFFICE EMPLOYERS BY EMPLOYMENT SPARTANBURG COUNTY

COMPANY	PRODUCT/SERVICE	PHONE	CODE
SPARTANBURG COUNTY SCHOOLS	Public School System	School Districts 1 - 7	N
SPARTANBURG REGIONAL MEDICAL CENTER	Hospital System	560-6000	N
BMW MANUFACTURING CORP.	Automotive Manufacturer	989-6000	N
STATE OF SOUTH CAROLINA	State Government	N/A	L
SPRINGS INDUSTRIES, INC.	Dyeing & Finishing Textiles	949-4000	K
MILLIKEN & COMPANY	Yarns, Chemicals, R&D	503-2020	J
SPARTANBURG COUNTY	Government - County Offices	596-2522	I
MICHELIN NORTH AMERICA, INC.	Radial Truck Tires	599-3000	H
CRYOVAC DIV-SEALED AIR CORP.	Flexible Plastic Packaging Material	433-2000	H
MARY BLACK HEALTH SYSTEM	Hospital System	573-3017	H
KOHLER	China Plumbing Fixtures	582-3401	G
KOSA	Plastic & Synthetic Man-Made Fibers	579-5750	F
RR DONNELLEY & SONS	Commercial Printing	579-6000	D
ALCOA FUJIKURA LTD - TELCO DIV	Electrical Lighting, Wire & Fiber Optics	433-0333	D
TIETEX INTERNATIONAL, LTD	Miscellaneous Textile Goods	574-0500	D
BMG MUSIC SERVICE DISTRIBUTION CENTER	Distribution of Records, CDs & Tapes	433-5000	G
SPARTANBURG STEEL PRODUCTS, INC.	Fabricated Structural Metal Products	585-5211	C
MRS. SMITH'S BAKERY	Bakery Products	503-9101	C
CITY OF SPARTANBURG	Government - City Offices	596-2062	B
DENNY'S CORPORATION	Food Preparations	597-8000	B

COMPANY	PRODUCT/SERVICE	PHONE	CODE
SIEMENS ENERGY & AUTOMATION, INC.	Busway Systems, Panelboards	576-6510	B
EXOPACK, LLC	Consumer Specialty Bags	585-3431	B
REEVES BROTHERS, INC.	Auto Air Bag Fabric	576-9210	B
LOCKWOOD GREENE ENGINEERING	Engineers, Architects & Consultants	578-2000	B
ZF LEMFORDER	Automotive Components	486-8125	A
SC SCHOOL FOR THE DEAF AND THE BLIND	Special School	585-7711	A
WABCO	Braking Systems	433-5900	A
PHELPS DODGE HIGH PERFORMANCE CONDUCTORS	Electroplated Copper & Alloy Wire	472-9022	A
UNIVERSITY OF S C SPARTANBURG	Public University	503-5322	A
ONE PRICE CLOTHING	Apparel Distribution	433-8888	A
CROWDER INDUSTRIAL	Industrial Construction & Maintenance	439-4164	A
MOHAWK INDUSTRIES, INC.	Rugs & Carpets	457-3391	A
HOKE, INC	Metalworking, Precision Valves	574-7966	A
TINDALL CORP.	Precast Prestressed Concrete Structures	576-3230	A
SC ELASTIC COMPANY	Elastic Cords	457-3388	A
SPARTANBURG HERALD JOURNAL	Newspaper	582-4511	A
TYCO	Automotive Components	472-4141	A
WOFFORD COLLEGE	Private School	597-4000	A
WISE FOODS, INC.	Snack Foods	585-9011	A
MOUNT VERNON MILLS, INC.	Weaving Mills, Cotton	585-8308	A
BEVERAGE AIR	Refrigeration Machinery	582-8111	**

<u>Code</u>	<u>Number of Employees</u>	<u>Code</u>	<u>Number of Employees</u>
A	250 - 399	H	1000 - 1249
B	400 - 499	I	1250 - 1499
C	500 - 599	J	1500 - 1749
D	600 - 699	K	1750 - 1999
E	700 - 799	L	2000 - 2499
F	800 - 899	M	2500 - 2999
G	900 - 999	N	3000 +

**Company requests employment figures remain confidential

Sources: 2002 Spartanburg County Profile, South Carolina Appalachian Council of Governments

South Carolina Industrial Directory 2002-2003, South Carolina Department of Commerce

COLLEGES & UNIVERSITIES SPARTANBURG COUNTY AREA

College/University/Technical Training Facility	Enrolled Fall 2001	Graduated 2001
Converse College	1,437	318
University of South Carolina Spartanburg	3,993	634
Wofford College	1,106	254
Spartanburg Methodist College	635	114
Spartanburg Technical College	3,366	545
Clemson University	17,101	3,700
Furman University	3,252	754
Bob Jones University	4,150	900
Limestone College	2,067	76
Greenville Technical College	11,544	1,735

Source: College Administration Offices, 1/03
SC Commission on Higher Education

SAT SCORES

2002

	ALL SENIORS TAKING SAT			SENIORS WITH 20 OR MORE ACADEMIC CREDITS		
	COMPOSITE	VERBAL	MATH	COMPOSITE	VERBAL	MATH
National	1020	504	516	1096	543	553
State	981	488	493	1050	524	526
Spartanburg	996	493	503	1064	528	536
District 1	945	472	473	999	498	501
District 2	996	493	503	1051	521	530
District 3	975	474	501	1022	487	535
District 4	969	492	504	1053	522	531
District 5	1037	514	523	1085	534	551
District 6	1040	519	521	1094	549	545
District 7	980	484	496	1072	530	542
Greenville	1004	501	503	1062	530	532
Anderson	1012	507	505	1082	543	540
Cherokee	929	457	472	978	478	500
Pickens	1032	514	518	1079	538	541
**Upstate	1004	500	504	1069	534	535
***MSA	994	494	500	1065	530	534

**Upstate includes Spartanburg, Greenville and Anderson Counties

***MSA includes Spartanburg, Greenville, Anderson, Cherokee & Pickens Counties